

# Walnut Hills Cemetery

circa. 1842



**MSP**  
DESIGN  
McGill Smith Punshon

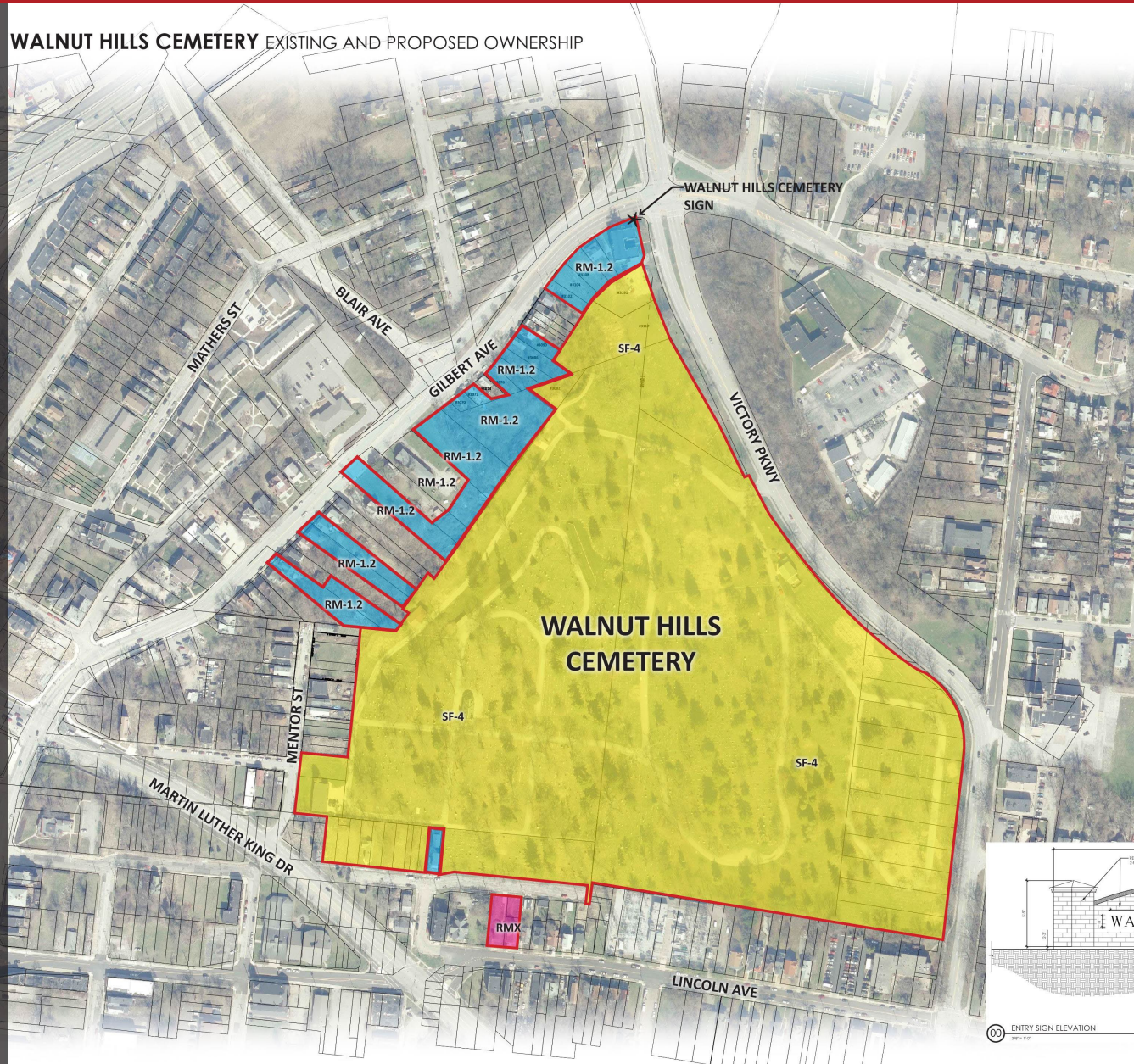
# Cemetery History

- Walnut Hills Cemetery was established in 1842
  - Predates any zoning requirements, but currently there is no established zoning for cemeteries
- In July 2020 the existing cemetery as well as the current parcels owned by Walnut Hills Cemetery were changed from RMX and RM 1.2 to SF-4.
- The reason behind the SF-4 designation is this is a Conditional use for a Cemetery use within this zoning designation.



# Ownership Map and Existing Zoning

## WALNUT HILLS CEMETERY EXISTING AND PROPOSED OWNERSHIP



- EXISTING CEMETERY (ZONED SF-4)
- NEW PARCELS (TO BE RE-ZONED TO SF-4)
- ADDITIONAL PARCELS OWNED OR TO POSSIBLY BE PURCHASED



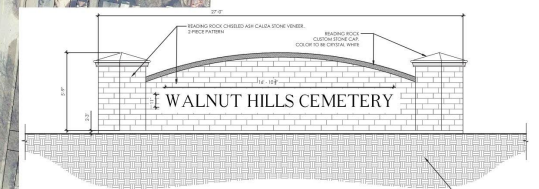
COLUMBARIUM AND SCATTERING GARDEN EXAMPLE



SCATTERING GARDEN EXAMPLE

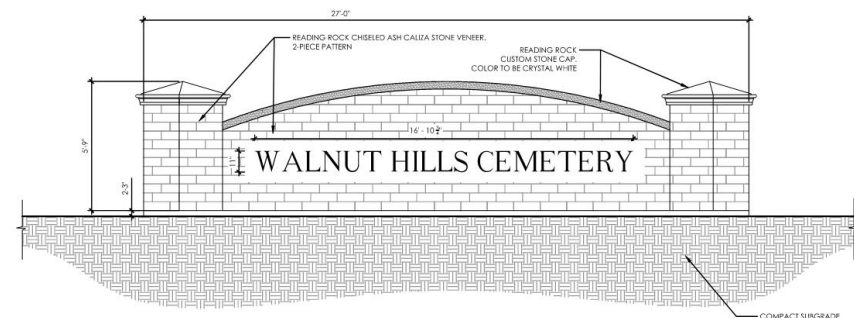


COLUMBARIUM EXAMPLE





# Proposed Uses



00 ENTRY SIGN ELEVATION  
3/8" = 1'-0"

DETAIL B  
SECTION



# Landscape Buffer

## PLANT SCHEDULE

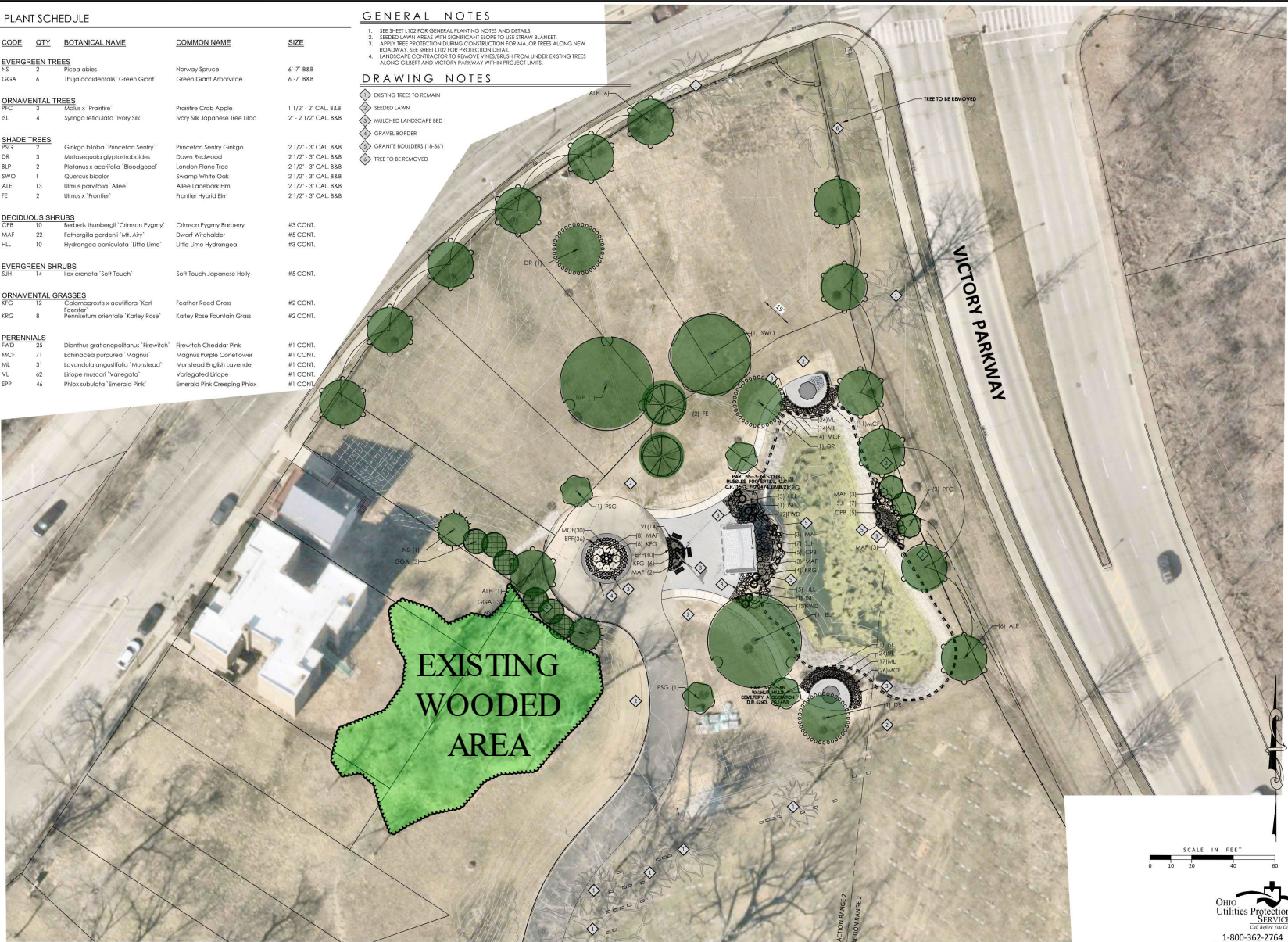
CODE	QTY	BOTANICAL NAME	COMMON NAME	SIZE
<strong>EVERGREEN TREES</strong>				
NS	2	Picea abies	Norway Spruce	6'-7' B&B
GGA	6	Thuja occidentalis 'Green Giant'	Green Giant Arborvitae	6'-7' B&B
<strong>ORNAMENTAL TREES</strong>				
PFC	3	Malus x 'Prairifire'	Prairifire Crab Apple	1 1/2" - 2" CAL. B&B
SL	4	Syringa reticulata 'Ivory Silk'	Ivory Silk Japanese Tree Lilac	2" - 2 1/2" CAL. B&B
<strong>SHADE TREES</strong>				
PSG	2	Ginkgo biloba 'Princeton Sentry'	Princeton Sentry Ginkgo	2 1/2" - 3" CAL. B&B
DR	3	Metasequoia glyptostroboides	Downy Redwood	2 1/2" - 3" CAL. B&B
BLP	2	Platanus x occidentalis 'Bloodgood'	London Plane Tree	2 1/2" - 3" CAL. B&B
SWO	1	Quercus bicolor	Swamp White Oak	2 1/2" - 3" CAL. B&B
ALE	13	Ulmus parvifolia 'Alee'	Alleé Lacebark Elm	2 1/2" - 3" CAL. B&B
FE	2	Ulmus x 'Frontier'	Frontier Hybrid Elm	2 1/2" - 3" CAL. B&B
<strong>DECIDUOUS SHRUBS</strong>				
CPS	15	Berberis thunbergii 'Climson Pygmy'	Climson Pygmy Barberry	#3 CONT.
MAF	22	Fothergilla gardenii 'Mt. Airy'	Dwarf Witchhazel	#5 CONT.
HLL	10	Hydrangea paniculata 'Little Lime'	Little Lime Hydrangea	#3 CONT.
<strong>EVERGREEN SHRUBS</strong>				
SJT	14	Ilex crenata 'Soft Touch'	Soft Touch Japanese Holly	#5 CONT.
<strong>ORNAMENTAL GRASSES</strong>				
KFG	12	Calamagrostis x acutiflora 'Karl Foerster'	Feather Reed Grass	#2 CONT.
KRG	8	Pennisetum orientale 'Katie Rose'	Katie Rose Fountain Grass	#2 CONT.
<strong>PERENNIALS</strong>				
FWD	25	Dianthus gratiopolitanus 'Friedrich'	Friedrich Cheddar Pink	#1 CONT.
MCF	71	Edimundus purpurea 'Magna'	Magna Purple Coreopsis	#1 CONT.
ML	31	Lavandula angustifolia 'Munstead'	Munstead English Lavender	#1 CONT.
VL	62	Liriodendron 'Variegata'	Variegated Liriodendron	#1 CONT.
EPP	46	Phlox subulata 'Emerald Pink'	Emerald Pink Creeping Phlox	#1 CONT.

## GENERAL NOTES

- SEE SHEET 1102 FOR GENERAL PLANTING NOTES AND DETAILS.
- SEEDED LAWN AREAS WITH SIGNIFICANT SLOPE TO USE STRAW BLANKET.
- APPLY TREE PROTECTION DURING CONSTRUCTION FOR MAJOR TREES ALONG NEW ROADWAY. SEE SHEET 1102 FOR PROTECTION DETAIL.
- LANDSCAPE CONTRACTOR TO REMOVE VINEY/BUSH FROM UNDER EXISTING TREES ALONG GLEBE AND VICTORY PARKWAY WITHIN PROJECT LIMITS.

## DRAWING NOTES

- EXISTING TREES TO REMAIN
- SEEDED LAWN
- MULCHED LANDSCAPE BED
- GRAVEL BORDER
- GRANITE BOULDERS (18-36")
- TREE TO BE REMOVED



3700 Park 42 Drive  
Suite 1000  
Cincinnati, OH 45244  
Phone 513.758.0004  
www.mspdesign.com

Project Manager BMG  
Drawn By 13353005-PLA-00  
DWG 13353024-MAP-00  
© 2024

Issue/Revision	No.	Date

Copyright 2024, MSP DESIGN, SMITH PUNSHON, INC.

WALNUT HILLS CEMETERY  
PLANTING PLAN  
3117 VICTORY PARKWAY,  
CINCINNATI, OH 45206

Sheet Title

## LANDSCAPE PLANS

Project Number 13353.05  
Drawing Scale 1" = 20'  
Sheet Number L101  
File Number 13353.05



# New Cemetery Space

